



Public Document Pack
B O S T O N
B O R O U G H C O U N C I L

Municipal Buildings
Boston
Lincolnshire PE21 8QR
Tel: **01205 314200**
Fax: **01205 364604**

**Joint Chief Executive
Rob Barlow**

28 September 2022

TO MEMBERS OF THE CORPORATE AND COMMUNITY COMMITTEE

**NOTICE OF MEETING OF THE
OVERVIEW & SCRUTINY - CORPORATE & COMMUNITY COMMITTEE**

Dear Councillor

You are invited to attend a meeting of the
Overview & Scrutiny - Corporate & Community Committee on
Thursday, 6th October, 2022 at 6.30 pm
in the Committee Room, Municipal Buildings, West Street, Boston PE21 8QR

ROB BARLOW
Joint Chief Executive

Membership:

Chairman: Councillor Stephen Woodliffe
Vice Chairman: Councillor Anton Dani
Councillors Tom Ashton, Alison Austin, Alan Bell, David Brown,
Frank Pickett, Judith Skinner, Yvonne Stevens, Peter Watson and
Judy Welbourn

A G E N D A

PART I – PRELIMINARIES

A MINUTES (Pages 1 - 2)

To sign and confirm the minutes of the last meeting.

B APOLOGIES

To receive apologies for absence and notification of substitutes (*if any*).

C DECLARATION OF INTERESTS

To receive declarations of interests in respect of any item on the agenda.

D PUBLIC QUESTIONS

To answer any written questions received from members of the public no later than 5 p.m. two clear working days prior to the meeting – for this meeting the deadline is 5 p.m. on Friday 2nd October 2022.

PART II - AGENDA ITEMS

1 HOUSING BENEFITS UPDATE (Pages 3 - 8)

(A report by Sharron Hammond – Head of Revenue & Benefits, PSPS)

2 LOCAL COUNCIL TAX SUPPORT SCHEME 2023/24 (Pages 9 - 16)

(A report by Sharron Hammond – Head of Revenue & Benefits PSPS)

3 SOUTH AND EAST LINCOLNSHIRE COMMUNITY SAFETY STRATEGY (Pages 17 - 40)

(A report by Peter Hunn – Community Safety Manager)

4 WORK PROGRAMME (Pages 41 - 42)

(For Members to note/discuss the Committee's current work programme)

Notes:

The person to contact about the agenda and documents for this meeting is Pippa Rose, Democratic Services Officer, Municipal Buildings, Boston, Tel. no: 01205 314227 email: pippa.rose@boston.gov.uk

Council Members who are not able to attend the meeting should notify Tel. no: 01205 314227 email: pippa.rose@boston.gov.uk as soon as possible.

Alternative Versions

Should you wish to have the agenda or report in an alternative format such as larger text, Braille or a specific language, please contact Democratic Services on direct dial (01205) 314226

OVERVIEW & SCRUTINY - CORPORATE & COMMUNITY COMMITTEE

14 July 2022

Present: Councillor Stephen Woodliffe (Chairman), Councillor Anton Dani (Vice-Chairman), Councillors Tom Ashton, Alison Austin, Judith Skinner, Peter Watson and Judy Welbourn

In attendance:

Officers –

Assistant Director - Assets and Deputy Chief Executive (Growth)

8 MINUTES

The minutes of the last meeting were agreed by the Committee and signed by the Chairman.

9 APOLOGIES

Apologies of absence were received by Councillors Frank Pickett and Yvonne Stephens.

10 DECLARATION OF INTERESTS

None

11 PUBLIC QUESTIONS

None

12 UK SHARED PROSPERITY FUND

The Deputy Chief Executive (Growth) presented a report which outlined the UK Shared Prosperity Fund draft submission and provided background on the consultation process. The Deputy Chief Executive (Growth) confirmed that the £2.2 Million will not decrease as that is the allocated amount for Boston and that as a result the 4% provision of funding will remain the same.

Following Portfolio Holder comments Members discussed the capacity of the Economic Development department and agreed to look further into the potential of funding the department more.

Members were in full support of the Investment Plan and welcomed the prospect of 'Levelling Up' the Borough.

RESOLVED:

That the Committee;

- 1. Note the report and draft submission and comments will be made to the Cabinet**

Support the submission of the Investment Plan to Department of Levelling Up, Communities and Housing.

13 SOCIAL IMPACT OF POPULATION CHANGE - REPORT ADOPTED BY

BOSTON BOROUGH COUNCIL, 19 NOVEMBER 2012

In November 2011 the Social Impact of Population Change in Boston Task and Finish Group was set up under the Council's Corporate and Community Scrutiny Committee. The all party Group wanted to let everyone in Boston who felt the 'social impact of population change' share their views. The process adopted was simple – it was about listening to people, taking evidence from the community and from partners and then defining what the Council could do, what and who it could influence and what it could ask and expect from others on behalf of its residents.

A vast amount of evidence was taken from a very wide range of partners and stakeholders in order to produce a report that was adopted by Full Council on 19 November 2012. The report contained 28 recommendations for action at local, regional, national and European levels; the report received wide and significant acknowledgement and won the Centre for Public Scrutiny Scrutineers's Choice Award and won the judge's Overall Impact Award at the Centre's awards ceremony on 11 June 2013. The original report was reviewed in May 2013, February 2014 and May 2014.

The Assistant Director – General Fund Assets, provided the Committee with a presentation which contained a brief update on the 28 recommendations almost a decade later.

As there are currently two other Task & Finish groups taking place Members considered both Member and Officer time in setting up another.

Members felt strongly that the item be placed on the first meeting of the Corporate & Community in the new Municipal Year to urge newly Elected Members to set up a Task & Finish group as soon as possible.

RESOLVED:

- 1. That the Committee add this report to the first meeting of Corporate and Community in the new Municipal year with the view of setting up a Task and Finish Group at that point**

The Boarder agency is invited to an all member briefing in March 2022.

14 WORK PROGRAMME

Members agreed to bring the Economic Development Team discussion to the meeting on the 1st December.

The Meeting Closed at 9.15 pm



REPORT TO:	Corporate & Community Committee
DATE:	6 October 2022
SUBJECT:	Benefits Update
PURPOSE:	To update Corporate & Community Committee.
KEY DECISION:	N/A
PORTFOLIO HOLDER:	Councillor Jonathan Noble, Portfolio Holder for Finance
REPORT OF:	Christine Marshall, deputy Chief Executive – Corporate Development (S151)
REPORT AUTHOR:	Sharon Hammond, Head of Revenues and Benefits (PSPS)
WARD(S) AFFECTED:	All
EXEMPT REPORT?	No

SUMMARY

This report provides an update on Benefits workload and performance, additional government schemes, and Housing Benefit overpayments, as requested by the Corporate and Community Committee.

RECOMMENDATIONS

That Corporate and Community Committee note the report.

REASONS FOR RECOMMENDATIONS

This report is provided for information.

OTHER OPTIONS CONSIDERED

N/a

1. BACKGROUND

1.1. At the request of the Corporate and Community Committee, this report provides an update on Benefits Service:

- Workload and performance
- Additional government schemes
- Housing Benefit Overpayments

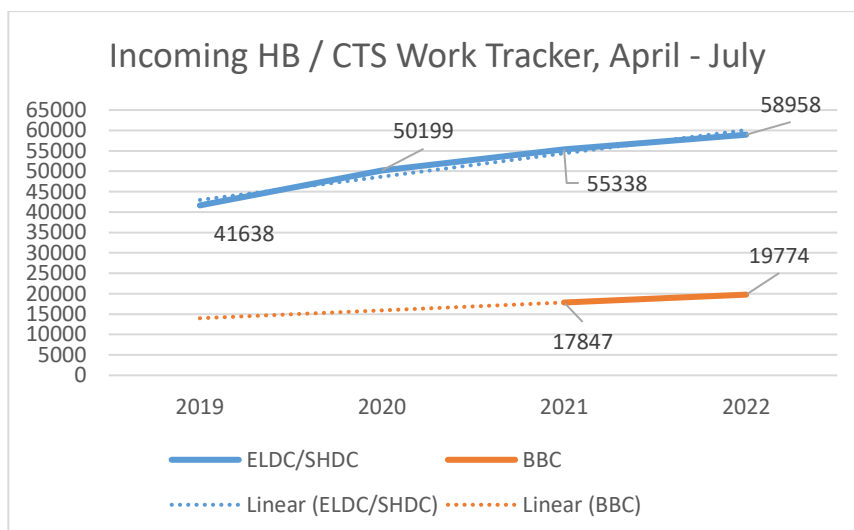
2. WORKLOAD AND PERFORMANCE

Workload

2.1 The Benefits service continues to see high levels of workload. There has been an 11% increase in incoming workload for BBC between April – July 2022 compared to April – July 2021. The following table demonstrates this, by work type: -

Work Type	April - July 2021	April - July 2022	% Change
Customer	1271	1301	2%
UCDS	12065	14074	17%
ATLAS and VEP	4511	4399	-2%
TOTAL	17847	19774	11%

2.2 PSPS has gathered data on East Lindsey and South Holland workload over a number of years now, and whilst the historic data is not available for Boston, there is no reason to believe the trajectory would be any different. The position April – July for years 2019 to 2022 shows the upward trajectory through the covid pandemic.



2.3 By far, the movement of customers to Universal Credit (UC), firstly as part of the national roll out programme, and then the significant take up during covid, has meant there has been a shift in the volume and type of work being received by the Benefits service. Significant volumes of UC records are received, as can be seen in the table at point 2.1 above, a further 17% increase has been seen between April and July this year, compared to the same period last year.

Again, whilst we don't have data for Boston prior to April 2021, for East Lindsey and South Holland there was a 198% increase in UC work compared to pre-covid position in 2019. There is no reason to believe the position would be any different for BBC.

- 2.4 Universal Credit has had a significant impact on the work of Benefits services in recent years. Whilst BBC local Council Tax Support (CTS) policy has been amended to simplify the claim and changes process from a claimant perspective, this has not reduced the administration resource or effort required. However, it is pleasing to report that over the past 18 months, we have increased automation of UC records to around 55%.

Performance

- 2.5 Speed of processing relates to the average time taken to process new claims and change of circumstances, i.e. it is a measure of time taken from notification of claim / change, up to the point of decision.

The Department for Work and Pensions (DWP) monitor and publish the performance of local authorities only in relation to Housing Benefit. The latest published statistics are for 2021/22, and report BBC as 22 days for new claims, and 9 days for changes. The table below shows BBC's performance alongside national and East Midlands positions: -

2021/2022	HB New Claims	HB Changes
England	20	6
East Midlands	22	6
Boston BC	22	9
PSPS KPI target	22	9

- 2.7 Performance in 2022/23 remains an increasing challenge due to increased workload and resource levels, including the diversion of experienced assessors to deliver the covid test and trace scheme earlier in the year. Cumulative performance to the end August 2022 is 31 days for HB new claims and 9 days for change in circumstances, and for CTS is 32 days for new claims and 18 days for changes.

Through regular liaison meetings with DWP there is an understanding of the pressures that have been on local government benefits teams, and there are no current concerns with BBC HB performance.

There is no published information or comparative data for CTS speed of processing.

- 2.8 It is pleasing to report that fraud and error and data match activity was brought up to date in 2021/22 and is now being maintained; this helps to ensure claims are as accurate as possible.

Current Workload position

- 2.9 As at 12 September, we have 871 items of outstanding work for BBC. 81% of this is less than 4 weeks old, and 59% is less than 2 weeks old. This is an ongoing improving position as we head into the second half of the year.
- 2.10 Currently new claims, for both HB and CTS are picked up within just a few days of receipt, with only older ones outstanding as we wait for claimants to provide required evidence.

3. ADDITIONAL GOVERNMENT SCHEMES

- 3.1 The Revenues and Benefits service has changed through covid, and overall service 'performance' now extends beyond what would previously have been core business.
- 3.2 Alongside its core service delivery, the Revenues and Benefits service has, and continues to, deliver additional government financial support initiatives on behalf of client councils.

Test and Trace Support Payment (TTSP) Scheme

- 3.3 This scheme ended on 30 April 2022, with work concluding during May. TTSP was originally brought in for 3 months but was to eventually run for over 19 months, with the team from Benefits processing 1,909 applications for BBC, resulting in 878 payments of £500 to support S&ELCP residents on low incomes and benefits who were required to self-isolate.
- 3.4 Team members diverted from Benefits Assessment to deliver this scheme are being re-integrated into the Benefits service and are being supported with re-training as necessary.

£150 Energy Rebate scheme

- 3.5 Following the government announcement of this scheme in February, its creation and delivery has been far from straight forward. Revenues and Benefits resources have been diverted from day-to-day business to deliver the scheme since April. Across S&ELCP more than 115,000 payments have been made to eligible households, paying more than £17million. Of this, 25,308 relates to Boston residents, totalling £3,796,200.
- 3.6 The scheme will conclude in September, and will then be subject to reconciliation.
- 3.7 In addition, Boston has an allocation of £119,250 from a national £144m discretionary fund. The Revenues and Benefits service will be distributing this funding to eligible recipients by the end of November.

4. HOUSING BENEFIT OVERPAYMENTS (HBOP)

- 4.1 At the end June 2022, the level of Housing Benefit Overpayment for Boston BC was £2.4m, this is an average level of debt for each live HB claim of £945.
- 4.2 Data indicates that historically the level of Boston's HBOP is higher than would be expected for the caseload, and is an area for further analysis and focus for improvement.

EXPECTED BENEFITS TO THE PARTNERSHIP

Not applicable

IMPLICATIONS

SOUTH AND EAST LINCOLNSHIRE COUNCIL'S PARTNERSHIP

None

CORPORATE PRIORITIES

None

STAFFING

None

CONSTITUTIONAL AND LEGAL IMPLICATIONS

None

DATA PROTECTION

None

FINANCIAL

None

RISK MANAGEMENT

None

STAKEHOLDER / CONSULTATION / TIMESCALES

None

REPUTATION

None

CONTRACTS

None

CRIME AND DISORDER

None

EQUALITY AND DIVERSITY/ HUMAN RIGHTS/ SAFEGUARDING

None

HEALTH AND WELL BEING

None

CLIMATE CHANGE AND ENVIRONMENTAL IMPLICATIONS

None

ACRONYMS

UC	Universal Credit
DWP	Department for Work and Pensions
TTSP	Test and Trace Support Payment
S&ELCP	South and East Lincolnshire Council Partnership
HB	Housing Benefit
CTS	Council Tax Support

APPENDICES

None

BACKGROUND PAPERS

None

CHRONOLOGICAL HISTORY OF THIS REPORT

A report on this item has not been previously considered by a Council body

REPORT APPROVAL

Report author:	Sharon Hammond, Head of Revenues and Benefits
Signed off by:	Deputy Chief Executive - Corporate Development (S151) Christine.marshall@sholland.gov.uk
Approved for publication:	Portfolio Holder for Finance



REPORT TO:	Corporate & Community Committee
DATE:	6 October 2022
SUBJECT:	Local Council Tax Support Scheme 2023/24 - consultation
PURPOSE:	To update Corporate & Community Committee on the local Council Tax Support scheme, and seek views as part of the consultation process for the 2023/24 scheme.
KEY DECISION:	N/A
PORTFOLIO HOLDER:	Councillor Jonathan Noble, Portfolio Holder for Finance
REPORT OF:	Christine Marshall, deputy Chief Executive – Corporate Development (S151)
REPORT AUTHOR:	Sharon Hammond, Head of Revenues and Benefits (PSPS)
WARD(S) AFFECTED:	All
EXEMPT REPORT?	No

SUMMARY

The Council Tax Support Scheme was first introduced in April 2013 and is reviewed annually. The scheme for the current year was approved by Council in January 2022.

This report updates members on the scheme to date, and the proposals for 2023/24 ahead of final scheme recommendations and approval.

RECOMMENDATIONS

That Corporate and Communities Committee consider, and provide comment to Cabinet on: -

- i) The proposals for the 2023/24 local Council Support scheme, and
- ii) Views on instigating a fundamental review of the scheme for future implementation

REASONS FOR RECOMMENDATIONS

To enable Members to help inform the final scheme for 2023/24 through feedback to Cabinet, as part of the consultation process.

OTHER OPTIONS CONSIDERED

To retain current scheme, and not undertake a review, or to retain the current scheme without updating.

1. BACKGROUND

- 1.1 Council Tax Support (CTS) provides financial assistance to people on low incomes, by way of reduction in Council Tax.
- 1.2 As part of the Government's programme of welfare reform, the previous Council Tax Benefit (CTB) scheme was replaced by localised support arrangements. From April 2013, Councils have been required to establish local CTS schemes. The support is provided in the form of a discount applied to the Council Tax bill.
- 1.3 The Welfare Reform Act also contained provisions regarding the introduction of Universal Credit (UC) which impacts on the administration of Housing Benefit. UC was introduced for the Boston area in April 2015, and the full service was rolled out in September 2018, for new claims only. The government has confirmed their latest plans for the migration of existing legacy claims to be complete by the end of 2024.
- 1.4 Whilst regulations provide councils with flexibility to set up their own local arrangements, the Government expressed clear intentions in relation to certain aspects of a local scheme. These included:
 - For pensioners there should be no change in the level of awards because of this reform. This includes both existing and new benefit claimants. (The scheme for pensioners continues to be prescribed by government, providing support up to 100%).
 - Councils were required to also consider ensuring support for other vulnerable groups
 - Local schemes should support work incentives and avoid disincentives to move into work.

Boston Borough Council's scheme continues to deliver these intentions.

2. 2022/23 SCHEME REVIEW

- 2.1 At 31 May 2022 the amount of CTS discount awarded for 2022/23 was £3,675,639. The following table demonstrates how scheme expenditure has changed over the last few years.

Year	Cost of CTS scheme £	Difference between years
2018/19	3,705,651	
2019/20	3,807,971	2.76%
2020/21	4,229,929	11.08%
2021/22	3,727,103	-11.88%
2022/23 (@ 31/05/22)	3,675,639	-1.38%

- 2.2 The table below shows the profile of Council Tax Support caseload and expenditure as at 31 May 2022. The cost to Boston BC being approximately £493k (13.4%).

	*Total Claims	**2022/23 CTS Expenditure
All Groups	4142	3,675,639
Elderly	2038	2,063,578
Working Age	2104	1,611,061

- 2.4 Collection and recovery have been impacted as a result of the covid pandemic with the disruption and delays to recovery in 2020/21 having a knock-on effect into 2021/22 and subsequent years. Usual statutory recovery processes are back in place, and whilst recovery and collection continue beyond the end of the year in question, the prospect of recovery reduces. The current cost of living and energy cost crises add further risk to collection and recovery.
- 2.5 It remains difficult to forecast caseload and expenditure with any degree of certainty in the current economic climate. As the level of CTS expenditure fluctuates through the year, it is only at the end of a financial year that we can be assured of the total expenditure incurred. Pensioner caseloads tend to attract higher levels of awards than those of working age and are generally more static. As the scheme responds to circumstances and the economic climate, the caseload will also fluctuate, increasing and reducing as people go on and off benefits across the working age claimant group.

3 CURRENT ECONOMIC POSITION

Cost of Living

- 3.1 As part of this years' review, there is recognition of the cost of living and energy cost crises, and the uncertainty and difficulties that households are experiencing.
- 3.2 We are likely to see fluctuations in numbers of CTS claimants, potentially increasing with the prospect of a recession, and the subsequent increased demand for benefits and local support for low-income households.
- 3.3 Any change to a CTS scheme must be considered alongside wider challenges faced by local authorities; the need to strike a balance between a local fair and affordable CTS scheme which provides support to those in most need, and the cost of the scheme to all residents is essential. As such, the importance of maintaining current levels of support, providing consistency and continuity for customers, has been a priority consideration in the proposals for the next financial year.

Further Support

- 3.4 In addition to the local CTS scheme, the council has discretionary powers to award one-off Council Tax discounts to support households where there are exceptional personal circumstances or hardship. In line with local policy, applications are determined on a case-by-case basis, therefore ensuring due consideration is given to the unique circumstances of the applicant. It is anticipated, due to the current crises, that the council may see greater demand on the discretionary scheme.
- 3.5 BBC provides information on a range of wider support schemes which are delivered by, or signposted by, the council. Full details are published, and maintained, on the website and include the current Household Support Fund schemes.
- 3.6 People who are struggling to pay their Council Tax are encouraged to make contact with the council. This helps to ensure households are receiving any discounts and reductions that they may be eligible for. Alternative payment arrangements can also be made, for example helping with frequency of payment, or extending over a longer period.
- 3.6 By the end of November, a share of a discretionary Energy Rebate fund of £119k will be distributed to eligible low income / benefit households.

4 ESTABLISHING A COUNCIL TAX SUPPORT SCHEME FOR 2023/24

- 4.1 For each financial year, the billing authority must consider whether to revise its scheme or replace it with another scheme. Council Tax Support schemes cannot be changed mid-year.
- 4.2 The Local Government Finance Act requires that before a scheme can be adopted by the billing authority, it must:-
 - Consult any major precepting authority which has power to issue a precept to it,
 - Publish a draft scheme in such manner as it thinks fit, and
 - Consult such other persons as it considers are likely to have an interest in the operation of the scheme.

5. 2023/24 SCHEME CONSULTATION

- 5.1 It is felt that retaining the current scheme for the next financial year will provide continuity for claimants at a time when they might be experiencing other financial and personal difficulties post-covid and now in the current economic climate. There would be no major changes to the level of Council Tax Support that a customer receives. It will maintain a consistent approach in respect of the core principles of Boston's scheme since its introduction in 2013/14, and continues to recognise the additional needs of the vulnerable through the approach to its calculation. Uprating in line with DWP will ensure the scheme continues to benefit the most vulnerable and low-income households using the nationally recognised rates of DWP income.

The use of the councils discretionary powers will ensure additional support is available for those most in need.

5.2 Corporate and Community Committee are asked to consider and respond to Cabinet on the consultation for 2023/24 as follows: -

1. Do you think that the Council should retain its current scheme for the next financial year, to provide continuity?
2. Each year the Government reviews and generally increases the amount people need to live on for the calculation of welfare benefit. By applying the same changes to our Council Tax Support scheme, we would ensure that our scheme remains up to date with the Department for Work and Pensions (DWP) allowances and premiums each year.

Do you think we should increase our scheme in line with the Department for Work and Pensions provisions for 2023/24?

Consultation, and Decision-Making Process

- 5.3 Consultation is being carried out with major preceptors, and with members of the public and other stakeholders. The consultation has been promoted through social media, the council's website and Boston Bulletin. Hard copies have been available on request. The consultation runs to 30 September.
- 5.4 The final scheme will be considered at Cabinet on 7 December with recommendations for approval to Council on 23 January 2023.
- 5.5 All feedback from the consultation will be considered as part of the final 2023/24 scheme decision making process.

6 THE TIME FOR FUNDAMENTAL REVIEW?

- 6.1 BBC continues to base its scheme, with some adjustments, on the previous means tested national Council Tax Benefit (CTB) scheme as the basis of awarding support. As welfare reform has moved on and recognising the substantial shift of claimants to Universal Credit, it may be timely to consider options for the future, which could simplify the scheme for customers and be more relevant to the current times.
- 6.2 The maximum level of support provided by BBC is 75% leaving all working age claimant households a minimum of 25% of their Council Tax to pay. In the event of non-payment, whilst enforcement actions are available, the remedy for benefit households is insufficient to clear the debt in-year, resulting in escalation year on year. For example, a household in Band B in Boston receiving 75% support will be required to pay £7.11 per week. If that claimant is on a relevant DWP benefit, income from an attachment of benefit would be £3.75 per week, leaving a weekly shortfall of £3.36, which will be carried forward to future financial years.
- 6.3 A fundamental review of the scheme would provide the opportunity to consider the overall level of CTS support, and how it is distributed to support claimant groups. This may explore the possibility of different levels of award for different needs and/or household types. Changes that reduce evidence requirements can speed up the claims process and reduce the potential for claim adjustments, in turn simplifying the process and improving the customer experience.

- 6.4 As responsibility passed to billing authorities to determine their own local scheme, perhaps not surprisingly whilst there are some similarities, there is no single standard approach, and schemes vary from authority to authority. In recent years however, a number of councils have moved away from the previous CTB based approach. By way of example, analysis of 2022/23 CTS schemes across England reveals that around a quarter of all schemes are now income banded.
- 6.5 Any fundamental review would need to be carefully planned, and have particular regard to ensuring there are no unintended consequences for claimants. For this reason, any such review should be built around an adequate timeframe that ensures full and robust data modelling and development of options, full consultation, and with clarity on the objectives for the scheme from the outset.
- 6.6 Whilst administrative saving alone is unlikely to be the key driver for a fundamental scheme review and change, there may be potential for improved administration efficiency through simplification and increased automation as secondary outcomes.

EXPECTED BENEFITS TO THE PARTNERSHIP

There are no benefits to the partnership as a direct result of this report, however, should there be support for a more fundamental review, whilst recognising the local CTS scheme is a matter for each individual authority, there may be opportunities for alignment of the review, and possibly some standardisation of future schemes.

IMPLICATIONS

SOUTH AND EAST LINCOLNSHIRE COUNCIL'S PARTNERSHIP

None

CORPORATE PRIORITIES

None

STAFFING

None

CONSTITUTIONAL AND LEGAL IMPLICATIONS

None

DATA PROTECTION

None

FINANCIAL

The proposal for consultation in respect of the 2023/24 scheme set out in this report would not significantly affect the cost of the current scheme. However, CTS is demand led, and if caseload increases then expenditure would increase. The cost of the scheme is shared with major preceptors as it forms part of the collection fund.

In the event of a direction to progress a more fundamental review for future implementation, cost of instigating the review, data modelling and development of options etc would need to be confirmed.

RISK MANAGEMENT

None

STAKEHOLDER / CONSULTATION / TIMESCALES

Consultation for the 2023/24 Council Tax Support scheme proposal, as agreed with the Portfolio Holder for Finance, is being carried out with major precepting authorities, the public and other stakeholders.

The survey has been published on the Council's website, social media and press release.

Consideration of the scheme proposals, as set out in this report, by the Corporate and Community Committee forms part of the consultation process.

REPUTATION

None

CONTRACTS

None

CRIME AND DISORDER

None

EQUALITY AND DIVERSITY/ HUMAN RIGHTS/ SAFEGUARDING

The existing Council Tax Support scheme continues to be delivered on the basis of the DWP's previous Council Tax Benefit scheme regarding protection for vulnerable groups, including children and the disabled. An equality impact assessment is not considered necessary at this time.

HEALTH AND WELL BEING

None

CLIMATE CHANGE AND ENVIRONMENTAL IMPLICATIONS

None

ACRONYMS

CTS: Council Tax Support

UC: Universal Credit

CTB: Council Tax Benefit

APPENDICES

None

BACKGROUND PAPERS

None

CHRONOLOGICAL HISTORY OF THIS REPORT

A report on this item has not been previously considered by a Council body

REPORT APPROVAL

Report author:	Sharon Hammond, Head of Revenues and Benefits
Signed off by:	Deputy Chief Executive - Corporate Development (S151) Christine.marshall@sholland.gov.uk
Approved for publication:	Portfolio Holder for Finance



REPORT TO:	CORPORATE AND COMMUNITY COMMITTEE
DATE:	6 TH OCTOBER 2022
SUBJECT:	SOUTH AND EAST LINCOLNSHIRE COMMUNITY SAFETY STRATEGY
PURPOSE:	TO RECOMMEND ADOPTION OF THE SOUTH AND EAST LINCOLNSHIRE COMMUNITY SAFETY STRATEGY 2022-25
KEY DECISION:	N/A
PORTFOLIO HOLDER:	COUNCILLOR PAUL SKINNER (LEADER & PORTFOLIO HOLDER)
REPORT OF:	EMILY SPICER, ASSISTANT DIRECTOR – WELLBEING AND COMMUNITY LEADERSHIP
REPORT AUTHOR:	PETER HUNN, COMMUNITY SAFETY MANAGER / SARAH COCKER, COMMUNITY SAFETY PARTNERSHIPS OFFICER / DEE BEDFORD, COMMUNITY SAFETY & ENFORCEMENT MANAGER
WARD(S) AFFECTED:	ALL
EXEMPT REPORT?	NO

SUMMARY

This report sets out the duties placed on local authorities and other named statutory agencies in relation to crime and disorder (Sections 5-7 of the Crime and Disorder Act 1998). It outlines the current Community Safety Partnership (CSP) arrangements across the South and East Lincolnshire Councils Partnership (S&ELCP), and in Lincolnshire as a whole.

A Community Safety Strategy has been produced to demonstrate the work of the South and East Lincolnshire Community Safety Partnership (SELCSPP) which is working collaboratively with the County Safer Lincolnshire Partnership (SLP), as they seek to address crime and disorder at a local, sub-regional and County level. The Corporate and Community Committee is asked to support the recommendation to adopt the strategy for the period April 2022 to March 2025.

RECOMMENDATIONS

- a) Note the contents of the report and the work of partners in addressing crime and disorder in South and East Lincolnshire and Lincolnshire as a whole.
- b) Comment on the Community Safety Strategy and identified priorities for the SELCSP for the period 2022-25 prior to consideration by Executive Board and referral on to Council for endorsement as appropriate.

REASONS FOR RECOMMENDATIONS

To demonstrate and confirm the commitment of the South and East Lincolnshire Community Safety Partnership in working with the Safer Lincolnshire Partnership (SLP) to meet the statutory duties set out in the Crime and Disorder Act 1998 and address crime and disorder at a local level.

OTHER OPTIONS CONSIDERED

Continue to operate the SELCSP without producing a formal plan, at the expense of recognising the work undertaken locally to address crime and disorder across the S&ELCP.

1. BACKGROUND

- 1.1. CSPs (formerly known as Crime and Disorder Reduction Partnerships) were formed under Sections 5-7 of the Crime and Disorder Act 1998. CSPs are made up of representatives from the police, local authorities, fire and rescue authorities, health and probation services (the 'responsible authorities'). The responsible authorities have a duty to work in co-operation with other 'co-operating bodies' for example Registered Social Landlords and Parish Councils.
- 1.2. This report outlines the community safety landscape across the South and East Lincolnshire Councils (S&ELCP) geographical area and Lincolnshire as a whole, setting out the statutory duties placed on responsible authorities and the arrangements for how these are met in Lincolnshire.

2. REPORT

- 2.1. The 2007 Crime and Disorder Regulations (revised in 2011) set out the way in which the responsible authorities should carry out their functions as a CSP under Section 6 of the Act, and require the preparation of:
 - 1) A partnership plan for the local government area,

- 2) A county level community safety agreement, setting out the ways the responsible authorities in the county might work more effectively to implement the identified priorities by joint working.
- 2.2. The responsible authorities for a local government area are required to formulate and implement a strategy for:
- 1) the reduction of crime and disorder in the area (including anti-social and other behaviour adversely affecting the local environment),
 - 2) combatting the misuse of drugs, alcohol, and other substances in the area,
 - 3) the reduction of re-offending in the area,
 - 4) a new duty to formulate and implement a strategy for preventing people from becoming involved in serious violence and reducing instances of serious violence in the area.
- 2.3. CSPs have other statutory duties that must be fulfilled: -
- 1) to set up protocols and systems for information sharing,
 - 2) to regularly engage and consult with the public about their community safety priorities and issues,
 - 3) to commission Domestic Homicide Reviews (DHRs) following notification from the Police of a domestic homicide,
 - 4) to hold one or more public meeting during each year.
- 2.4. In addition to the above, Section 17 of the Crime & Disorder Act 1998 places a duty on all employees of responsible authorities to take into consideration crime and disorder in everything they do.
- 2.5. Working in partnership at a sub-region (SELCSP) and at a county level (SLP) enables the District Councils in the SELCSP to discharge their statutory duties. Examples include:
- 1) *Regularly engage and consult with the public* – this had been discharged by the SLP to the Police and Crime Commissioner (PCC) who has a duty to consult the community before making recommendations on precept levels to the Police and Crime Panel.
 - 2) *Commission DHR reviews* - The DHR duty will be delegated to the recently formed Domestic Abuse Partnership.

3. SOUTH AND EAST LINCOLNSHIRE COMMUNITY SAFETY PARTNERSHIP

- 3.1. The SELCSP covers the municipal areas of South Holland District Council, Boston Borough Council and East Lindsey District Council (collectively known as the South and East Lincolnshire Councils Partnership). Each local authority offers a range of community safety services to support a joined-up approach with partners. For example, provision of CCTV, addressing Anti-Social Behaviour (including coordination of the Anti-Social Behaviour Risk Assessment Conferences and Community Trigger), Public Places Protection Orders, emergency planning, Vulnerable Adults Panels (South Holland) and a safe at home scheme for victims of domestic abuse (East Lindsey).

- 3.2. Up to the end of March 2019, the SELCSP (formerly the East Lincolnshire Community Safety Partnership) routinely produced a partnership plan for reducing crime and disorder across the area.
- 3.3. Over the last three years, the SELCSP has operated in a less formal way, acting as a conduit for cascading information from the SLP to the district level, whilst maintaining local links between the responsible authorities to facilitate multi-agency working when required. It is now felt with the development of the South and East Lincolnshire Councils Partnership a return to more formal arrangements is required. Linked to this is the need to develop a Community Safety Plan for the sub-region.
- 3.4. The newly formed S&ELCP, between the three sovereign councils in the SELCSP area, provides a good grounding to support local community safety work, working with all relevant partners and complimenting (not duplicating) the work of the county level SLP.
- 3.5. The SLP is the multi-agency forum for addressing community safety issues at a Lincolnshire County level and aims (working alongside others such as the SELCSP) to:
1. Reduce crime and disorder and increase the safety of individuals and communities,
 2. Ensure those living, working, or visiting Lincolnshire feel safe and are equipped to cope with any hazards or threats they may encounter.
 3. Improve communication between agencies so they can work effectively.
- 3.6. The SLP consists of a Strategy Board and several Core Priority Groups, which coordinate and deliver activity against the priority areas. Lincolnshire County Council primarily funds the Safer Communities Team, which provides Business Management, Co-ordination, Analysis and Business Support for the SLP.

4. POLICE & CRIME COMMISSIONER

- 4.1. The Police Reform and Social Responsibility Act 2011 introduced elected Police & Crime Commissioners (PCCs) for each police force, responsible for developing a Police & Crime Plan (PCP) for their local area and for commissioning community safety and criminal justice services.
- 4.2. PCCs must have regard to the priorities of the responsible authorities making up the CSPs in the police area, and the responsible authorities must have regard to the objectives set out in the PCP, and to act in co-operation with each other in exercising their respective functions. Oversight of the PCC lies with the Police and Crime Panel, a joint committee that includes County and district council representatives.
- 4.3. In July 2020, the Minister of State for Crime and Policing announced a two-part review of the PCC model. The first stage of the review made recommendations to the Home Secretary on how to improve the accountability, scrutiny, and transparency of the current PCC model. It also served to map out longer-term reform ambitions in relation to fire and rescue services and mayoral devolution in England.

4.4. Part two of the PCC review aimed to examine further ways to strengthen and expand the PCC role, with a focus on the tools and levers that PCCs need to enhance efforts to cut crime. Recommendations from the review have been set out by government and include clarifying the local crime prevention landscape through an in-depth review of Community Safety Partnerships in England and Wales.

5. DEVELOPMENT OF THE SOUTH AND EAST LINCOLNSHIRE COMMUNITY SAFETY STRATEGY

- 5.1. A strategy has been prepared using the format of the last partnership plan (2016-2019). An action plan for the year ahead (2022-2023) will support the strategy and will sit with the SELCSP. Information from the county strategic assessment has been reviewed along with routine data on crime and ASB from Lincolnshire Police, information from the pilot initiative StreetSafe (which allows people to anonymously report areas they feel unsafe), and perception data from the Lincolnshire Crime and Policing Survey. This has been considered alongside the county priorities identified for the SLP. Five priority areas have been identified which are detailed in the plan:
- 5.2. **Anti-Social Behaviour (ASB)** - Tackling ASB is a core role for the partnership with dedicated ASB Officers and Police Coordinators working together and with other agencies daily. We address high risk and complex ASB cases through multi-agency Anti-Social Behaviour Risk Assessment Conferences (ASBRACs). The district councils coordinate the Community Trigger (also known as the Anti-Social Behaviour Case Review) which gives victims the right to demand a formal case review where the local threshold is met.
- 5.3. **Hate Crime** – Through working more closely with Just Lincolnshire (the single equality organisation in the county) it has been identified that reporting of Hate Crime in Lincolnshire has *decreased* by 12.5% in 2020-21 compared to 2019-20, a reversal of year on year increases over the last decade and against a 9% *increase* nationally. This is concerning, particularly as Hate Crime is widely acknowledged to be underreported. The SELCSP seeks to work to raise awareness of hate crime, targeting individuals and groups who are more likely to be victims, and ensure there are a variety of methods for people to report Hate Crimes and incidents with confidence.
- 5.4. **Safer Streets & Night-Time Economy** – Community safety work to support the Night-Time Economy and the safety of our streets within urban centres and local neighbourhoods provides greater opportunities for local businesses and communities to thrive with a reduced risk of crime and disorder. Government's Beating Crime Plan gives focus to early intervention, prevention, and practical measures to make communities safer, and to tackle serious violence and neighbourhood crimes. The Safer Streets Fund has enabled improvements to be made to CCTV and ANPR capacity in East Lindsey, amongst other measures, to bring focus to safety at the neighbourhood level. Multi-agency working between police and ELDC licensing officers, utilising the drugs itemiser provides a real opportunity to increase safety during the evening hours and gives scope for widening this work across the partnership area, facilitated by the SELCSP.
- 5.5. **The Safety of Women & Girls** – Using local data and information, a bid was submitted to round four of the Safer Streets fund and was successful in bringing nearly £400k to the

partnership area. This will support work on Violence against Women and Girls (VAWG) in public places and aims to increase feelings of safety. CCTV was cited as something that would increase feelings of safety amongst local college students in Skegness and this is central to the bid. A Sexual Violence Needs Assessment, commissioned by the PCC in 2020, showed that densely populated areas have the highest volume of offences. Public engagement undertaken by the PCC's Office also identifies that people worrying about being raped or sexually assaulted has risen year on year. Using police crime data and information from StreetSafe it has been possible to identify hot spot locations where harassment is the most frequently reported issue in Boston, Skegness, and Spalding. These areas are the focus of the bid, incorporating key night-time economy areas and pedestrian routes which have been identified as being disproportionately affected by VAWG. This compliments other work streams including the Women's Concordat, which aims to improve outcomes for women and girls at risk of entering or who have already entered the criminal justice sector, and ensures it is embedded within local work streams to keep our sub-region a safe area to live, work and visit.

5.6. **Vulnerability & Safeguarding** – Information from the Index of Multiple Deprivation shows that people living in the 10% most deprived neighbourhoods in Lincolnshire are three times more likely to have an adult safeguarding enquiry than those living in the least deprived areas, nearly four times likely to be a victim of crime, and nearly six times more likely to be in children's social care. The second and third most deprived areas in the county can be found within our sub-region - Skegness and Chapel St Leonards. Frontline officers, including police, council and health workers, encounter children and vulnerable adults on a regular basis, it is imperative that they are invested in safeguarding and adequately trained to carry out their duties competently. Recent cases of modern-day slavery and exploitation in Boston and South Holland demonstrate the need for officers and the public to report any suspicions. The SELCSP can drive work locally to ensure that officers can identify signs of issues such as sexual exploitation, county lines, modern slavery, and serious and organised crime, as well as understanding more recent approaches such as Contextual Safeguarding.

6. **CONCLUSION**

6.1. Sections 5-7 of the Crime & Disorder Act 1998 set out the way in which the responsible authorities should carry out their functions as a CSP.

6.2. In Lincolnshire the responsible authorities work as a combined area to fulfil the statutory duties through the South and East Lincolnshire Community Safety Partnership and the County SLP. The SELCSP is an informally merged CSP covering the S&ELCP area. For the last three years the SELCSP has not produced a strategy, however, it is recognised that the work undertaken locally should be recognised and communicated to our partners and the public. A strategy has therefore been produced to promote the dedication and commitment of partners working across the S&ELCP in tackling crime and ASB and aims to provide a focus for actions to be developed to address the priority community safety issues that impact on communities within the sub-region.

EXPECTED BENEFITS TO THE PARTNERSHIP

The Community Safety Strategy has been developed as a cross-partnership strategy aiming to communicate our priorities and aspirations for keeping our communities safe. It highlights the

strength of local partnership arrangements; and provides reputational benefits to the S&ELCP as a driver of local action to tackle crime and disorder. The proposed Community Safety Strategy will support our delivery against our statutory community safety responsibilities working alongside key partners.

IMPLICATIONS

SOUTH AND EAST LINCOLNSHIRE COUNCILS PARTNERSHIP

The Community Safety Strategy demonstrates the commitment of the S&ELCP in keeping our communities safe and outlines how this can be achieved by working with external partners. It establishes the ambition of the SELCSP to maintain autonomy within the CSP structures in Lincolnshire.

CORPORATE PRIORITIES

The Community Safety Strategy supports the following corporate priorities:

- Boston Borough Council – ‘Priority 1 - People Focused’ (main priority)
- East Lindsey District Council – ‘Improve equality of opportunity across the district and in target areas’
- South Holland District Council – ‘Your Place’ and ‘Your Health and Wellbeing’

The production of a Community Safety Strategy is a strategic activity within the S&ELCP Annual Delivery Plan 2022-23.

STAFFING

Current staffing resource across the partnership will support the delivery of the strategy with additional resources identified through further funding as necessary.

CONSTITUTIONAL AND LEGAL IMPLICATIONS

The statutory duties required of CSPs, as set out in the Crime & Disorder Act 1998, which are met through working with the County SLP which works as a combined area for Lincolnshire.

DATA PROTECTION

Data Protection will be dealt with under the partnership’s information sharing agreements.

FINANCIAL

External funding has been granted through the government Safer Streets Fund which will support the Safer Streets and Safety Against Women and Girls priorities. Further funding opportunities will be sought wherever possible to support delivery of the plan. That aside, delivery will be managed from existing partner commitments and resources.

RISK MANAGEMENT

All risks will be managed as part of the strategy and action plan development as appropriate.

STAKEHOLDER / CONSULTATION / TIMESCALES

Consultation has been undertaken with the Portfolio Holders of each sovereign council, members of the South and East Lincolnshire Community Safety Partnership and with key officers across the S&ELCP (Corporate Management and Service Managers). Feedback has been positive and constructive; the version presented incorporates suggested additions and amendments to an initial draft.

The delivery timeframe for the Community Safety Strategy (as set out in the Annual Delivery Plan) is Quarter 2, 2022.

REPUTATION

The Community Safety Strategy will have a positive impact on the reputation of the S&ELCP as it shows our dedication to improving the safety and wellbeing of our local communities.

CRIME AND DISORDER

The Community Safety Strategy supports delivery of duties placed on responsible authorities in the Crime and Disorder Act 1998.

EQUALITY AND DIVERSITY/ HUMAN RIGHTS/ SAFEGUARDING

The priorities within the strategy seek to address discrimination, harassment, and victimisation, and promote safeguarding of vulnerable people within our communities.

HEALTH AND WELL BEING

The Community Safety Strategy aims to address ASB and crime, which can have a detrimental impact on people's health and wellbeing. Victim engagement and referral to additional support services is an integral part of its delivery.

CLIMATE CHANGE AND ENVIRONMENTAL IMPLICATIONS

None

LINKS TO 12 MISSIONS IN THE LEVELLING UP WHITE PAPER

MISSIONS	
This paper contributes to the follow Missions outlined in the Government’s Levelling Up White paper.	
Wellbeing	By 2030, well-being will have improved in every area of the UK, with the gap between top performing and other areas closing.
Pride in Place	By 2030, pride in place, such as people’s satisfaction with their town centre and engagement in local culture and community, will have risen in every area of the UK, with the gap between the top performing and other areas closing.
Crime	By 2030, homicide, serious violence, and neighbourhood crime will have fallen, focused on the worst-affected areas.

ACRONYMS

CSP – Community Safety Partnership

S&ELCP – South and East Lincolnshire Councils Partnership

SELCSPP – South and East Lincolnshire Community Safety Partnership

SLP - Safer Lincolnshire Partnership

DHR – Domestic Homicide Review

PCC- Police and Crime Commissioner

ASB – Anti-Social Behaviour

ASBRAC - Anti-Social Behaviour Risk Assessment Conferences

VAWG – Violence Against Women and Girls

APPENDICES

Appendices are listed below and attached to the back of the report: -

APPENDIX A	South & East Lincolnshire Community Safety Strategy April 2022 to March 2025
------------	--

BACKGROUND PAPERS

Background papers used in the production of this report are listed below: -

Document title	Where the document can be viewed
Crime & Disorder Act 1998	Crime and Disorder Act 1998 (legislation.gov.uk)
Beating Crime Plan	Beating crime plan - GOV.UK (www.gov.uk)
South & East Lincolnshire Councils Partnership Annual Delivery Plan 2022/2023.	S&ELCP Annual Delivery Plan 2022-23

CHRONOLOGICAL HISTORY OF THIS REPORT

A report on this item has not been previously considered by a Council body.

REPORT APPROVAL

Report author:	Peter Hunn Community Safety Manager Boston Borough Council Municipal Buildings, West Street Boston Lincolnshire PE21 8QR E-mail: Peter.Hunn@boston.gov.uk
Signed off by:	John Leach, Deputy Chief Executive - Communities Boston Borough Council Municipal Buildings, West Street Boston Lincolnshire PE21 8QR E-mail: John.Leach@boston.gov.uk
Approved for publication:	Leader of the Council and Portfolio Holder, Councillor Paul Skinner, Boston Borough Council



South & East Lincolnshire Community Safety Strategy

April 2022 to March 2025

Introduction

Community Safety Partnerships were introduced by the Crime and Disorder Act (1998) which places a statutory duty on responsible authorities to work together to reduce crime and disorder.

The South and East Lincolnshire Community Safety Partnership (SELCSP) is an informally merged partnership administered through the South and East Lincolnshire Councils Partnership, covering the Lincolnshire districts of Boston Borough, East Lindsey, and South Holland. The SELCSP is made up of statutory agencies along with representatives from the Safer Lincolnshire Partnership (SLP) and the Lincolnshire Police and Crime Commissioner's Office.

At a county level, the SLP is the informally merged partnership for Lincolnshire. It is responsible with the SELCSP for meeting the statutory duties required of Community Safety Partnerships (CSPs). This includes the preparation and implementation of a strategy to reduce crime and disorder, anti-social behaviour, substance misuse, reducing reoffending and preventing and tackling serious violence.

This strategy sets out the local priorities and work streams for the SELCSP over next three years.



The South & East Lincolnshire Community Safety Partnership's vision:

“We will combine our knowledge, powers and expertise to reduce anti-social behaviour, crime, and the fear of crime in South and East Lincolnshire, to ensure that the area remains one of the safest places to live, work and visit”

Delivering a Safer South and East Lincolnshire

All partners of the SELCSP are actively working to reduce crime and anti-social behaviour on a daily basis. We use the technology, resources, tools and powers available to us to keep our communities safe.

Page 29

CCTV

- Monitoring of public spaces
- Operational 24 hours a day, 365 days a year
- 810 incidents witnessed by CCTV operators in 2021-2022
- 210 live arrests that CCTV operators contributed to in 2021-2022

Public Spaces Protection Orders

- Ensuring public spaces can be enjoyed free from Anti-Social Behaviour (ASB)
- In specific areas across the partnership to address issues such as alcohol-related ASB, control of dogs, littering and spitting
- Incremental approach used to tackle persistent offenders

Prevent

- Identifying and supporting people who may be at risk of radicalisation
- Helping communities to identify and challenge violent extremism appropriately

Communication and Engagement

- Quarterly police priority setting incorporating the views of the public
- Routine crime prevention and safety messages throughout the year
- The Police and Crime Commissioner's Safer Together Team – working directly with local communities

What you said – Public Consultation

Each year the Police and Crime Commissioner engages and consults with the residents of Lincolnshire on crime and policing. Below are respondent's views from Boston Borough, East Lindsey and South Holland.

- Over half of residents (52%) in Boston Borough said that their quality life is affected by fear of crime, giving a score of 5 or more on a scale of 1 to 10 (with 1 being not at all affected and 10 being severely affected). This compares to 43% of residents in South Holland and 35% in East Lindsey.
- More people in South Holland (74%) and Boston Borough (72%) view speeding traffic to be a 'very big' or 'fairly big' problem than residents of East Lindsey (66%).
- Residents of Boston Borough are more likely to regard '...people using or dealing drugs' as a 'very big' or 'fairly big' problem in their local area (55%), compared to 49% in South Holland and 39% in East Lindsey.
- Around a third of residents perceive burglary to be a 'very big' or 'fairly big' problem - 36% in Boston Borough, 33% in East Lindsey and 31% in South Holland.
- 27% of residents aged under 50 in Boston Borough had reported a crime or incident to Lincolnshire Police, compared to 23% in South Holland and 22% in East Lindsey.

What you said – StreetSafe

StreetSafe is a pilot initiative introduced as part of the Government's response to tackling violence against women and girls. It provides an online facility for anyone to anonymously report public places where you have felt unsafe because of environmental issues, such as vandalism, and/or because of some behaviours, such as being followed or verbally abused.

Page 31
59 people identified environmental and behavioural issues via StreetSafe across Boston Borough (38 reports), East Lindsey (14 reports) and South Holland (7 reports). Most reports were made by females (38), with 14 reports by males and 2 reports by people who preferred not to say.

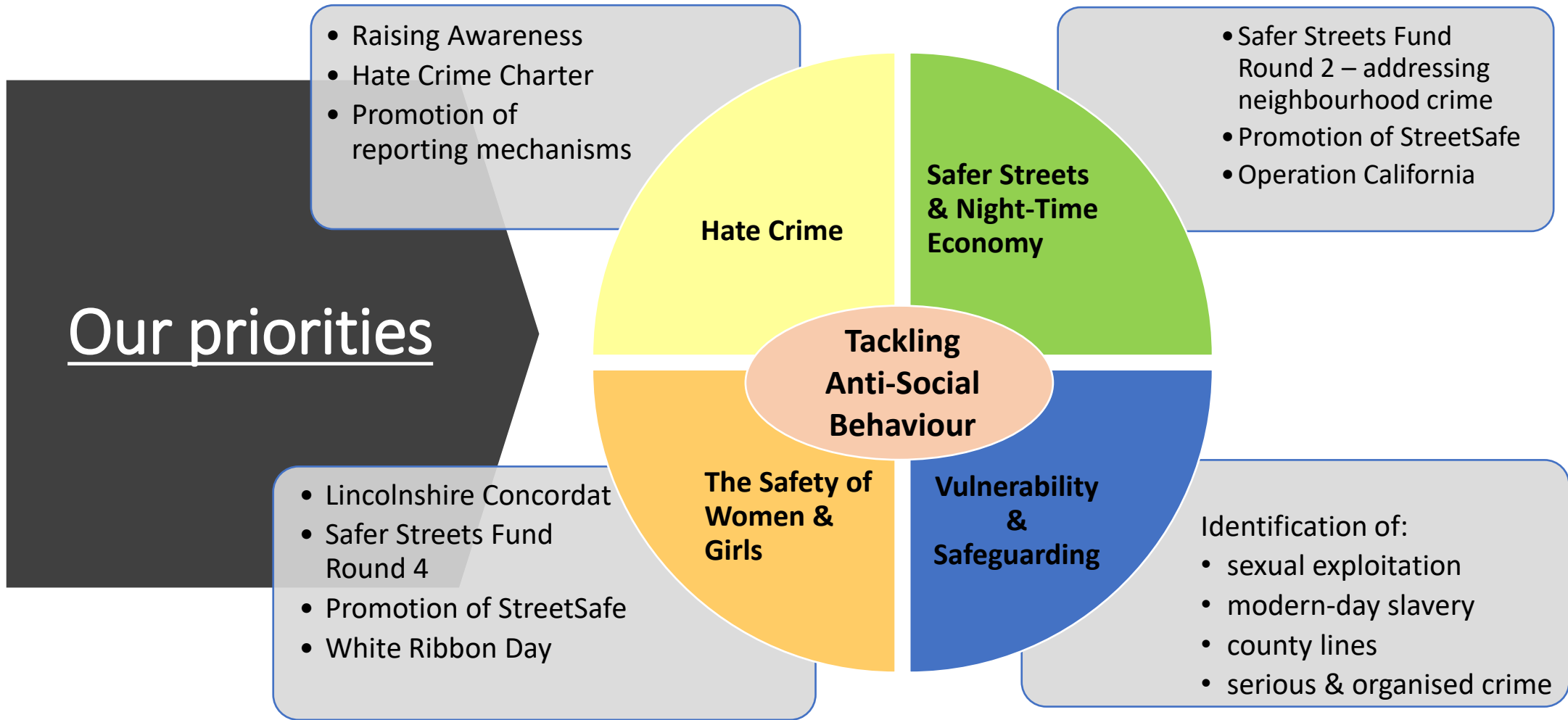
Behavioural

- Feeling like you are being followed / have previously been followed.
- Verbal harassment from a single stranger or a group of people.
- Other forms of harassment.

Environmental

- Badly lit / poor or no street lighting.
- Signs of drug or alcohol use.
- Restricted visibility - overgrown bushes and trees, walls.
- Empty buildings or isolated places.
- Absence of CCTV.
- Rundown e.g. derelict buildings, abandoned cars, graffiti, fly-tipping etc.
- Poor street layout e.g. blind spots and hidden areas.

The South & East Lincolnshire Community Safety Partnership has identified key areas of focus for the next three years:



Activity against each of these key priorities will be monitored by the SELCSP via an action plan

Our priorities in more detail

Tackling Anti-Social Behaviour

Tackling ASB is a core role for the partnership with dedicated ASB Officers and Police ASB coordinators working together with other agencies on a daily basis.

Over 10,500 incidents of ASB were reported to Lincolnshire Police alone across the partnership area in 2021-22.

We are part of the Lincolnshire ASB Partnership, working with agencies to tackle ASB through countywide policies and procedures and sharing best practice.

ASB is consistently identified by our communities as a priority area at quarterly policing priority setting.

We address high risk and complex ASB cases through multi-agency Anti-Social Behaviour Risk Assessment Conferences (ASBRACs).

The district councils coordinate the Community Trigger (also known as the Anti-Social Behaviour Case Review) which gives victims the right to demand a formal case review where the local threshold is met.

Top five reported ASB incidents by type (Lincolnshire Police)

ASB Category	Boston Borough	East Lindsey	South Holland
Inconsiderate Behaviour	596	1046	487
Neighbours	184	599	251
Drunken Behaviour	184	281	123
Vehicle Nuisance	134	214	206
Noise Nuisance	133	186	130
Total	1231	2326	1197

Informal action taken to tackle ASB across the partnership area 21-22

Stage 1 warning letter	247
Stage 2 warning letter	58
Acceptable Behaviour Agreement	12

Our priorities in more detail

Hate Crime

A hate crime or incident is any crime or incident which is perceived by the victim, or any other person, to be motivated by hostility or prejudice based on a person's actual or perceived social group or groups

Hate crimes and incidents can take many forms, including physical attacks, threats, verbal abuse, neighbour disputes, arson, graffiti, intimidation or harassment, bullying at school, college or work.

Reports of hate crime in Lincolnshire reduced by 12.5% in 2020-21 compared to the previous year – a contradictory trend to the national increase of 9% over the same period. We believe that hate crimes and incidents are under-reported by victims.

We are working with Just Lincolnshire (the single equality organisation in the county) to raise the profile of hate crime in our communities, and amongst our staff, so that people can recognise when a hate crime or incident has occurred.

We aim to support our diverse communities in reporting hate crimes and incidents, ensuring there are a variety of ways in which to share the information, so that they can receive support and guidance. We aim to create a culture within our communities where hate is not tolerated.

The law recognises five types of hate crime on the basis of:

- Race
- Religion
- Disability
- Sexual orientation
- Transgender identity



Our Priorities In More Detail

**Safer
Streets &
Night Time
Economy**

Government's Beating Crime Plan gives focus to early intervention, prevention, and practical measures to make communities safer, and to tackle serious violence and neighbourhood crimes.

Round two of the Government's Safer Streets Fund has enabled improvements to be made to CCTV and ANPR capacity in East Lindsey, amongst other measures, to bring focus to safety at the neighbourhood level.

In addition, multi-agency working through 'Operation California' between Lincolnshire Police, East Lindsey District Council and other agencies, provides engagement opportunities with pubs and clubs along the coast. The use of the drugs itemiser, which can detect drug residue on people and surfaces, helps to tackle drug use and dealing in our communities, as well as wider issues such as ASB.

We are committed to expanding this work across the partnership area, working together and sharing resources to tackle the issues highlighted by our communities.



Our Priorities In More Detail

National data* shows that men are more likely than women to be a victim of homicide. However, women are far more likely to be the victims of sexual assault and rape than men. In addition, the overwhelming majority of homicides, rapes and sexual assaults are carried out by men.

When we look at perceptions of personal safety, women are much more likely to feel unsafe when alone after dark. This is the case if they are walking alone in a park or other open space, a busy public place or in a quiet street near their home. Women also consistently report higher fear of crime than men, despite being less likely to be victims of many types of crime.

Locally, the Police and Crime Commissioner's Lincolnshire Youth Commission engaged with over 1000 young people and identified sexual assaults or street harassment as the biggest threats to their safety. Street harassment and stalking has also been directly raised as an issue at public engagement events undertaken by the Safer Together Team in Spalding, Boston and Skegness.

Working with the Police and Crime Commissioner's Office we have secured funding through round four of the Government's Safer Streets Fund with a primary focus on Violence Against Women and Girls (VAWG) in public places and feelings of safety from VAWG.

This funding will enable us to create Safe Zones Areas as routes that will have blanket CCTV coverage from night-clubs and public houses to all recognised taxi ranks, bus stops and regular pick-up points. The funding will also provide the installation of 'Artificial Intelligence' servers alongside the new CCTV cameras to allow police officers to search footage quickly using details such as clothing description or vehicle type.



*Source: Office for National Statistics

Our Priorities In More Detail

Vulnerability
&
Safeguarding

Safeguarding is everyone's responsibility. We work closely with various agencies to promote people's welfare and protect them from harm.

All employees of our agencies have a role to play in identifying concerns, sharing information and taking prompt action when issues are identified.

We have safeguarding policies that provide guidance to officers, to protect people's health, wellbeing and human rights, and to prevent problems escalating to enable them to live free from harm, abuse or neglect.

The SELCSP is committed to driving work locally to ensure that officers can identify signs of issues such as sexual exploitation, county lines, modern slavery, and serious and organised crime, and taking the necessary action to have this investigated further.



How you can help us

Residents play a vital role in supporting us to keep our communities safe. We need your help in meeting our vision to keep our area one of the safest places to live, work and visit. Small contributions from the public can make a huge difference overall. Please follow our suggestions below to play your part in helping us to help you.

Page 38

Report crime and hate crime <ul style="list-style-type: none">• Report a crime Lincolnshire Police (lincs.police.uk)• Home - Stop Hate UK	Report unsafe locations <ul style="list-style-type: none">• StreetSafe Police.uk (www.police.uk)	Contact Crimestoppers <ul style="list-style-type: none">• Contact Crimestoppers to remain anonymous on 0800 555 111 or visit Crimestoppers (crimestoppers-uk.org)	Report anti-social behaviour <ul style="list-style-type: none">• Report antisocial behaviour Lincolnshire Police• Contact your local council ASB team	Follow Crime Prevention Advice <ul style="list-style-type: none">• Improve security on your property• Crime prevention advice Lincolnshire Police (lincs.police.uk)	Volunteer <ul style="list-style-type: none">• Police support volunteer vacancies• Join or set up a Neighbourhood Watch Group in your local area	Have Your Say <ul style="list-style-type: none">• Contribute to the Police & Crime Commissioner's police and crime survey• Contribute to your local Neighbourhood Policing Team's priority setting
---	---	--	---	---	---	--

List of Acronyms

SELCSP - South & East Lincolnshire Community Safety Partnership

BBC – Boston Borough Council

ELDC – East Lindsey District Council

SHDC – South Holland District Council

SLP - Safer Lincolnshire Partnership

CSP - Community Safety Partnership

CCTV - Closed Circuit Television

ASB - Anti-Social Behaviour

ASBRAC - Anti-Social Behaviour Risk Assessment Conference

ANPR Automatic Number Plate Recognition

VAWG Violence Against Women & Girls

Useful Websites

[Boston Borough Council \(mybostonuk.com\)](http://mybostonuk.com)

[East Lindsey District Council \(e-lindsey.gov.uk\)](http://e-lindsey.gov.uk)

[South Holland District Council \(sholland.gov.uk\)](http://sholland.gov.uk)

[Lincolnshire County Council \(Lincolnshire.gov.uk\)](http://Lincolnshire.gov.uk)

[Lincolnshire Police \(lincs.police.uk\)](http://lincs.police.uk)

[Lincolnshire's Police and Crime Commissioner \(lincolnshire-pcc.gov.uk\)](http://lincolnshire-pcc.gov.uk)

[Lincolnshire Fire and Rescue \(Lincolnshire.gov.uk/Lincolnshire-fire-rescue\)](http://Lincolnshire.gov.uk/Lincolnshire-fire-rescue)

[Lincolnshire Integrated Care Board \(Lincolnshire.icb.nhs.uk\)](http://Lincolnshire.icb.nhs.uk)

[Lincolnshire Partnership NHS Trust \(lpft.nhs.uk\)](http://lpft.nhs.uk)

[Safer Lincolnshire Partnership \(Lincolnshire.gov.uk/crime-prevention/safer-Lincolnshire-partnership\)](http://Lincolnshire.gov.uk/crime-prevention/safer-Lincolnshire-partnership)

[Lincolnshire Housing Partnership \(lincolnshirehp.com\)](http://lincolnshirehp.com)

[Platform Housing Group \(platformhg.com\)](http://platformhg.com)

[Longhurst Group | \(longhurst-group.org.uk\)](http://longhurst-group.org.uk)

Glossary

Hate Crime Charter – A series of commitments for agencies in Lincolnshire to fulfil in raising awareness of hate crime and hate incidents.

Operation California – Lincolnshire Police’s aim to prevent violence, anti-social behaviour and to tackle drugs along the coast.

Lincolnshire Concordat – Commitment of Lincolnshire agencies to work together to improve outcomes for women and girls at risk of entering, or who have already entered ,the criminal justice sector.

Safer Streets Fund – A Home Office fund allowing Police and Crime Commissioners and Local Authorities to apply for funding for crime prevention plans.

White Ribbon Day – Annual campaign marking the start of 16 days of action to end violence against women and girls.

Modern-day slavery – A serious crime that violates human rights, where victims are forced, threatened or deceived and controlled in order to exploit them.

Sexual exploitation – Actual or attempted abuse of someone’s position of vulnerability, differential power or trust to obtain sexual favours, including but not only, by offering money or other social, economic or political advantages. It includes trafficking and prostitution.

County lines – Where illegal drugs are transported from one area to another, often across police and local authority boundaries, usually by children or vulnerable people who are coerced into it by gangs. The ‘County Line’ is the mobile phone line used to take the order od drugs.

Serious & organised crime – Individuals planning, co-ordinating and committing serious offences, whether individually, in groups or as part of transnational networks.

Beating crime plan – Government’s plan to deliver change to reduce crime and victims and create a safer country.

Safeguarding – The process, practice and culture embedded to create a safe environment where children, young people and adults at risk are free from all forms of harm, abuse and neglect.

Public Spaces Protection Orders – A power that local authorities can use to deal with a nuisance problem in a particular area that is detrimental to the community’s quality of life. Conditions can be imposed on the use of that area which apply to everyone.

CORPORATE AND COMMUNITY COMMITTEE – WORK PROGRAMME 2022/23

MEETING	AGENDA ITEMS	PRESENTED OR FACILITATED BY	PORTFOLIO HOLDER (PFH)
26 MAY 2022	1. Cultural Strategy 2. Guildhall Recovery	Lydia Rusling Phil Perry	Cllr Richard Austin
14 JULY 2022	1. UK Shared Prosperity Fund 2. Update on Recommendations from Previous Migrant Task & Finish	Michelle Sacks Andy Fisher	
6 OCT 2022	1. Housing Benefits Update 2. Council Tax Support Scheme Consultation 3. South and East Lincolnshire Community Safety Strategy	Sharron Hammond “ Peter Hunn	
1 DEC 2022	1. Economic Development Support 2. Business Rates 3. Corporate Enforcement Policy	Michelle Sacks Sharron Hammond Christian Allen	Cllr Nigel Welton Cllr Paul Skinner
2 FEB 2023			
16 MAR 2023			

This page is intentionally left blank